

ACCUTRAK™ ROTARY POSITION MONITORS MODELS 2007/9479/360/366

EXPLOSIONPROOF/FLAMEPROOF

Fully integrated and encapsulated rotary valve position monitors that are certified for use in explosive atmospheres.



FEATURES

- Touch set cams are hand adjustable, spring loaded and self-locking providing quick calibration of position switches and sensors.
- Terminal strips are pre-wired and numbered with generous working space for ease of use.
- Strong durable Beacon™ offers 360° visual indication in a choice of styles and colors.
- Additional conduit for easy field wiring and mounting accessories as standard.
- Standardized mounting pattern for easy adaptation to common bracketry.
- NAMUR shaft output compliant to VDI/VDE 3845 available..
- Eliminator option for easy integration of external solenoid valve.
- Aluminum enclosures with ultra-low copper content (0.2% maximum) ensure robust performance in corrosive environments.
- Rugged stainless steel enclosures.

TECHNICAL DATA

Agency approvals

Explosionproof/flameproof
Models 2007/9479

CL I, Div. 1, Groups C & D; T*
CL II, Div. 1, Groups E, F & G; T*
CL I, Zone 1 Aex db / Ex db IIB+H2 T*
Zone 21, Aex tb / Ex tb IIIC T* Db IP6X
II 2 G Ex db IIB+H2 T* Gb Ta= -*°C to +*°C
II 2 D Ex tb IIIC T* Db Ta= -*°C to +*°C,
IP6X
Ex db IIC T* Gb Ta= -*°C to +*°C (INMETRO Approval Only)

Non-Incendive
Model 9479 Only

CL I, Div. 2, Groups A, B, C & D; T*, T2C
(Heater Option Only) Tamb: -*°C to +*°C¹
IP66/67

Explosionproof/flameproof
Model 360/366

CL I, Div. 1, Groups A², B, C & D; T*
CL II/III, Div. 1, Groups E, F & G; T*
II 2 G Ex db IIC T* Gb Ta= -60°C to +*°C
II 2 D Ex tb IIC T* Db Ta= -60°C to +*°C,
IP6X
NI, CL I, Div. 2, Groups A, B, C, D; T*
(w/ sensors xM06, xM12, xM17, xM18 Only)
6P

Non-Incendive
Model 360/366

Enclosure standards
All enclosures

Type 4, 4X

Switches**

Magnum/MagPAC
V3 (SPDT) & DPDT mechanical
Pepperl + Fuchs model NJ2-V3-N

Enclosures

Aluminum
Stainless steel

GENERAL APPLICATION

AccuTrak position monitors are ideal for manual and automated rotary valves. They provide consistent and accurate valve monitoring in a compact unit which can be mounted directly or via a valve actuator.

NOTES

¹ This information can change depending on the construction, refer to the certification.

² Solenoid option not available

*Ambient temperature depend on configuration, see product certificate for details

**Refer to ordering guides for switch options

ACCUTRAK™ ROTARY POSITION MONITORS

EXPLOSIONPROOF

Explosionproof/flameproof
Models 2007/9479

Cl. I, Div. 1, Groups C & D; T*
Cl. II, Div. 1, Groups E, F & G; T*
Cl. I, Zone 1 Aex db / Ex db IIB+H2 T*
Zone 21, Aex tb / Ex tb IIIC T* Db IP6X
II 2 G Ex db IIB+H2 T* Gb Ta= -*°C to +*°C
II 2 D Ex td IIIC T* Db Ta= -*°C to +*°C, IP6X
Ex db IIC T* Gb Ta= -*°C to +*°C (INMETRO Approval Only)

Non-Incendive
Model 9479 Only

Cl. I, Div. 2, Groups A, B, C & D; T*, T2C
(Heater Option Only) Tamb: -*°C to +*°C¹
IP66/67

Explosionproof/flameproof
Model 360/366

Cl. I, Div. 1, Groups A², B, C & D; T*
Cl. II/III, Div. 1, Groups E, F & G; T*
II 2 G Ex db IIC T* Gb Ta= -60°C to +*°C
II 2 D Ex td IIC T* Db Ta= -60°C to +*°C, IP6X

Non-Incendive
Model 360/366

NI, Cl. I, Div. 2, Groups A, B, C, D; T*
(w/ sensors xM06, xM12, xM17, xM18 Only)
6P

Enclosure standards
All enclosures
Explosionproof/flameproof
Models 2007/9479

Type 4, 4X

Cl. I, Div. 1, Groups C & D; T*
Cl. II, Div. 1, Groups E, F & G; T*
Cl. I, Zone 1 Aex db / Ex db IIB+H2 T* Zone
21, Aex tb / Ex tb IIIC T* Db IP6X
II 2 G Ex db IIB+H2 T* Gb Ta= -*°C to +*°C
II 2 D Ex td IIIC T* Db Ta= -*°C to +*°C,
Ex db IIC T* Gb Ta= -*°C to +*°C (INMETRO Approval Only)

Non-Incendive
Model 9479 Only

Cl. I, Div. 2, Groups A, B, C & D; T*, T2C
(Heater Option Only) Tamb: -*°C to +*°C¹
IP66/67

Explosionproof/flameproof
Model 360/366

Cl. I, Div. 1, Groups A², B, C & D; T*
Cl. II/III, Div. 1, Groups E, F & G; T*
II 2 G Ex db IIC T* Gb Ta= -60°C to +*°C
II 2 D Ex td IIC T* Db Ta= -60°C to +*°C, IP6X

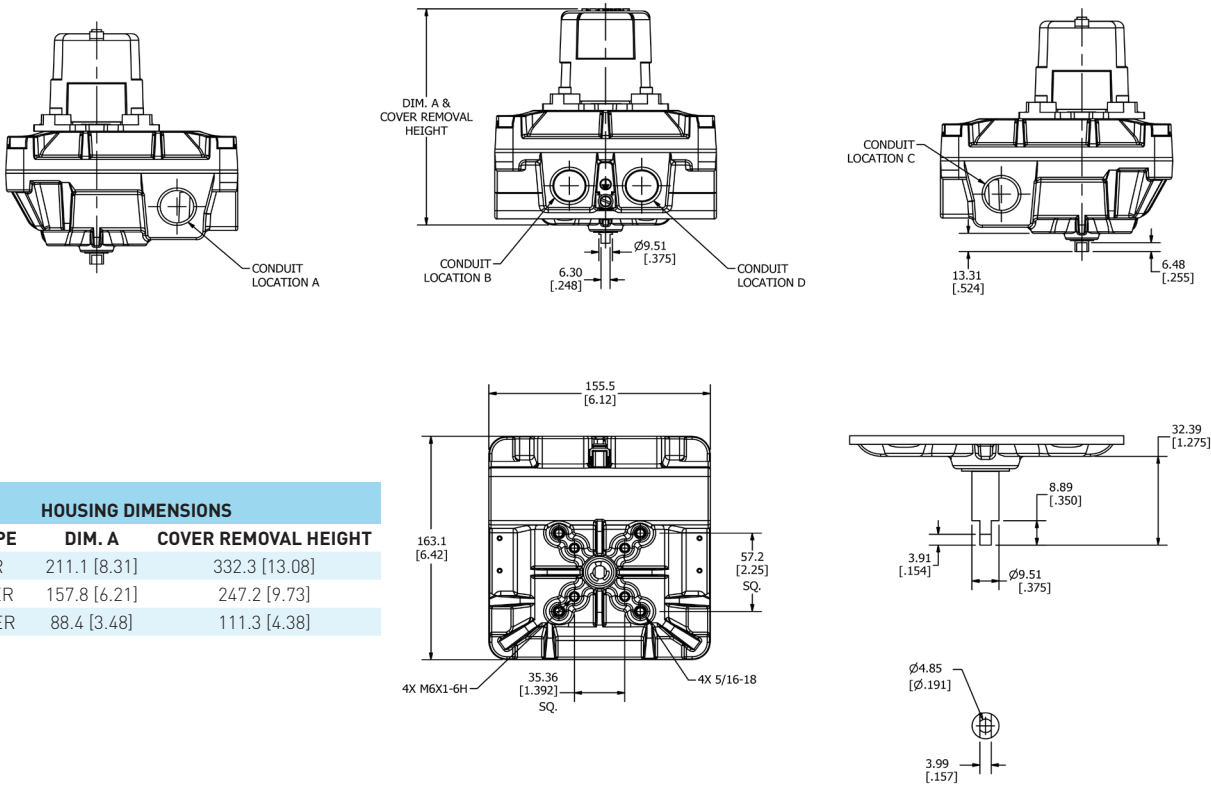
Non-Incendive
Model 360/366

NI, Cl. I, Div. 2, Groups A, B, C, D; T*
(w/ sensors xM06, xM12, xM17, xM18 Only)
6P

Enclosure standards
All enclosures
MODELS 2007/9479 DIMENSIONS

Type 4, 4X

ACCUTRAK™ ROTARY POSITION MONITORS EXPLOSIONPROOF



Dimensions in inches, where available metric dimension (mm) in parentheses

TECHNICAL SPECIFICATIONS

Materials of construction	
Enclosure	Aluminum with powder coat finish
Shaft and hardware	Stainless steel
Bushing	Oil impregnated bronze
Beacon visual indicator	Co-polyester
Drive shaft	
Westlock standard	Double-D with ¼" A/F
NAMUR standard	NAMUR standard VDI/VDE 3845
Available switches	
	V3 mechanical switches, SPDT
	DPDT (Form CC) mechanical switches
	Pepperl + Fuchs model NJ2-V3-N
	Magnum (hermetically sealed proximity type)
	MagPAC bifurcated switch pack (9479 ONLY)
Options	
	Stainless steel enclosure

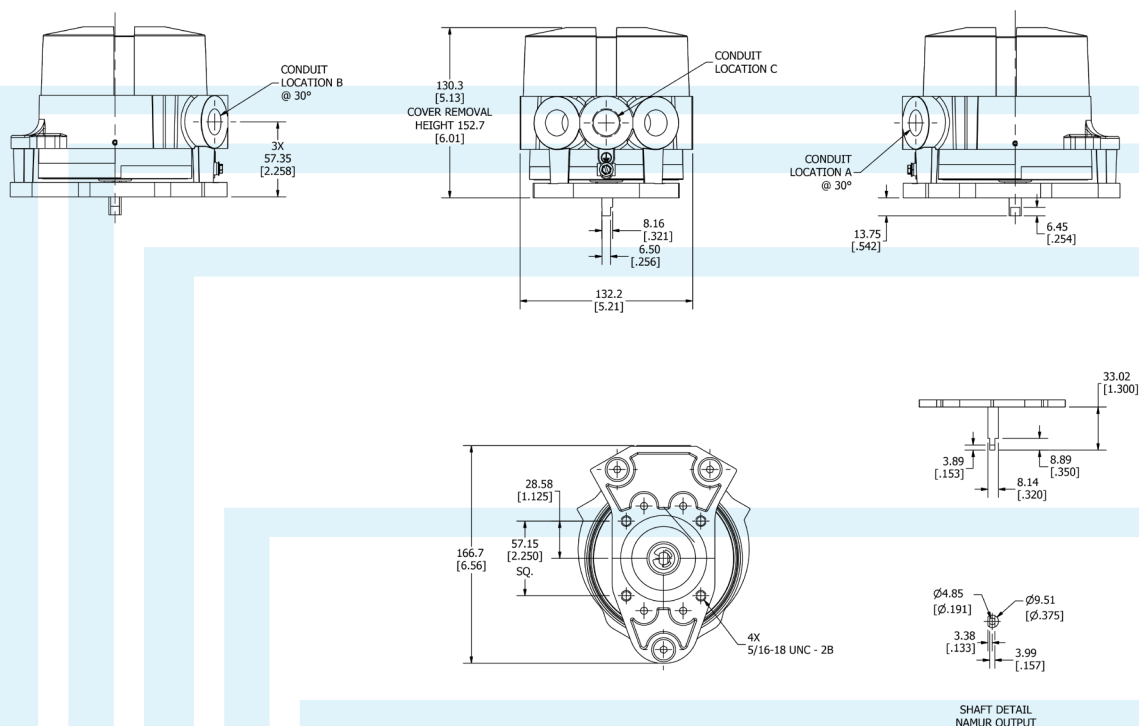
NOTES

1. See selection guide for standard conduit entries
2. See switches & sensors data sheet for further information
3. A specialist eliminator fitting is available for the mounting of an aftermarket solenoid valve
4. Please consult your sales office for any other requirements



MODELS 360/366 DIMENSIONS

ACCUTRAK™ EXPLOSIONPROOF ROTARY POSITION MONITORS



Dimensions in inches, where available metric dimension (mm) in parentheses

TECHNICAL SPECIFICATIONS

Materials of construction

Enclosure	Aluminum with powder coat finish
Model 360	Stainless steel with electropolished finish
Model 366	Stainless steel
Shaft and hardware	Stainless steel
Bushing	Oil impregnated bronze
Beacon visual indicator	Co-polyester

Drive shaft

Westlock standard	Double-D with 1/4" A/F
NAMUR standard	NAMUR standard VDI/VDE 3845

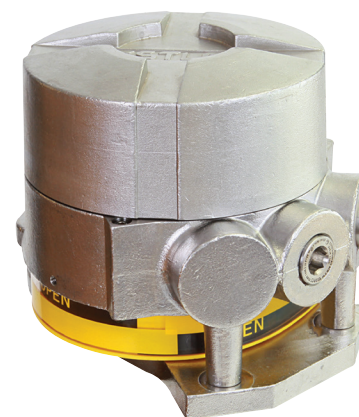
Available switches

V3 mechanical switches, SPDT
 DPDT (Form CC) mechanical switches
 Magnum, SPDT hermetically sealed switches, with tungsten contacts
 Magnum, SPDT hermetically sealed switches, with rhodium contacts

Notes

1. See selection guide for standard conduit entries
2. See switches & sensors data sheet for further information
3. A specialist eliminator fitting is available for the mounting of an aftermarket solenoid valve
4. Please consult your sales office for any other requirements

MODEL 2007 SELECTION GUIDE



Base model

2007 Aluminum enclosure

Shaft output

- S Standard (Double-D with 1/4" Flats)
- D Direct mont to Keystone F89 actuators
- N NAMUR

Beacon

- BY BM2-Y (Standard)
- RG BM2-RG (Red Closed/Green Open)
- FE BM2-Y-FE (French/English)
- LP BM2- Y-LP (Low Profile Standard)
- B1 BM3-1 (3-way B1 Flowpath)
- B3 BM3-3 (3-way B3 Flowpath)
- B5 BM3-5 (3-way B5 Flowpath)
- B7 BM3-7 (3-way B7 Flowpath)
- B9 BM3-9 (3-way B9 Flowpath)
- FC Flat cover - **not available with switch options requiring high cover**

Conduit

- 2B Two 3/4NPT (F) - **not permitted with switch options 6M02 or 4M04**
- 4B Four 3/4" NPT (F)
- 4E Two 3/4" NPT (F), One 1/2" NPT (F) & One 1/2" NPT (M) Global Eliminator Fitting*
- 4F Two 3/4" NPT (F) & Two 1/2" NPT (M) Global Eliminator Fittings*
- EA Two 3/4" NPT (F) & Two 1/2" NPT (F)
- 2M Two M20 (F) - **not permitted with switch options 6M02 or 4M04**
- 4M Four M20 (F)

Position switches

- 2M02 Two SPDT Mechanical Switches - 8 pt. Terminal Strip
- 4M02 Four SPDT Mechanical Switches - 16 pt. Terminal Strip
- 6M02 Six SPDT Mechanical Switches - 24 pt. Terminal Strip, High Cover, 4 Conduits
- 2M04 Two DPDT Mechanical Switches - 16 pt. Terminal Strip
- 4M04 Four DPDT Mechanical Switches - 24 pt. Terminal Strip, High Cover, 4 Conduits

Position Transmitter

- 00 None

Unit Specialty Codes (leave blank for standard builds)

- M0000 INMETRO Certification
- 00124 316 Stainless Steel Enclosures
- 00692 **120 VAC Heater Resistor
- 00710 12 pt. Terminal Strip
- 00816 **24 VDC Heater Resistor

= Model number **2007NBY2B2M020000**

2007 N BY 2B 2M02 00

ORDERING NOTES

- *Eliminator Fitting is 1/2" NPT (M) for the purpose of mounting an after market solenoid valve.
- **For INMETRO replace first digit of the specialty code with M; For e.g. 2007NBY2B2M0200**M**0124
- ***T Ratings for optional heater resistors changes to T2C.

ACCUTRAK™ EXPLOSIONPROOF ROTARY POSITION MONITORS
MODEL 9479 SELECTION GUIDE

ACCUTRAK™ EXPLOSIONPROOF ROTARY POSITION MONITORS

MODEL 360/366 SELECTION GUIDE

Base model					
9479	Aluminum enclosure				
	Shaft output				
	S	Standard (Double-D with 1/4" Flats)			
	D	Direct mount to Keystone F89 actuators			
	N	NAMUR VDI/VDE 3845			
	Beacon				
	BY	BM2-Y (Standard)			
	RG	BM2-RG (Red Closed/Green Open)			
	FE	BM2-Y-FE (French/English)			
	LP	BM2-Y-LP (Low Profile Standard)			
	B1	BM3-1 (3-Way B1 Flowpath)			
	B3	BM3-3 (3-Way B3 Flowpath)			
	B5	BM3-5 (3-Way B5 Flowpath)			
	B7	BM3-7 (3-Way B7 Flowpath)			
	B9	BM3-9 (3-Way B9 Flowpath)			
	FC	Flat cover - not available with switch options requiring high cover			
	Conduit				
	2B	Two 3/4NPT (F) - not permitted with 6 SPDT or 4 DPDT switch options			
	4B	Four 3/4" NPT (F)			
	4E	Two 3/4" NPT (F), One 1/2" NPT (F) & One 1/2" NPT (M) Global Eliminator Fitting*			
	4F	Two 3/4" NPT (F) & Two 1/2" NPT (M) Global Eliminator Fittings*			
	EA	Two 3/4" NPT (F) and Two 1/2" NPT (F)			
	2M	Two M20 (F) - not permitted with 6 SPDT or 4 DPDT switch options			
	4M	Four M20 (F)			
	Position Switches (see ordering notes)				
	2M06	Two SPDT Magnum Switches - 8 pt. Terminal Strip			
	2M08	Two P+F NJ2-V3-N NAMUR Inductive Proximity Sensors - 8 pt. Terminal Strip			
	2M12	Two SPDT Magnum Switches, Rhodium Contacts - 8 pt. Terminal Strip			
	2M13	MagPAC Module (Two SPST Bifurcated Reeds), Diagnostic LEDs - 12 pt. Terminal Strip			
	4M06	Four SPDT Magnum Switches - 16 pt. Terminal Strip			
	4M08	Four P+F NJ2-V3-N NAMUR Inductive Proximity Sensors - 16 pt. Terminal Strip			
	4M12	Four SPDT Magnum Switches, Rhodium Contacts - 16 pt. Terminal Strip			
	6M06	Six SPDT Magnum Switches - 24 pt. Terminal Strip, High Cover, 4 Conduits			
	6M08	Six P+F NJ2-V3-N NAMUR Inductive Proximity Sensors - 16 pt. Terminal Strip, High Cover			
	6M12	Six SPDT Magnum Switches, Rhodium Contacts - 24 pt. Terminal Strip, High Cover, 4 Conduits			
	Position Transmitter				
	00				
	Unit Specialty Codes <i>(leave blank for standard builds)</i>				
	M0000	INMETRO Certification			
	00124	316 Stainless Steel Enclosure			
	00692	**120 VAC Heater Resistor			
	00710	12 pt. Terminal Strip			
	00816	**24 VDC Heater Resistor			
9479	N	BY	2B	2M12	00
= Model number 9479NBY2B2M1200					

ORDERING NOTES

*Eliminator Fitting is 1/2" NPT (M) for the purpose of mounting an after market solenoid valve.

For INMETRO replace first digit of the specialty code with M; For e.g. 9479NBY2B2M1200M**0124

***T Ratings for optional heater resistors changes to T2C.

POSITION SWITCH APPLICATION NOTES

For 120 VAC service, M13 (MagPAC) is recommended.

For 24 VDC service below 1 watt, M12 (Rhodium Magnum Switches) or M13 (MagPAC) is recommended.

For 24 VDC service above 1 watt, M06 (Tungsten Magnum Switches) or M13 (MagPAC) is recommended.

ACCUTRAK™ EXPLOSIONPROOF ROTARY POSITION MONITORS

MODEL 360/366 SELECTION GUIDE

Crane Co., and its subsidiaries cannot accept responsibility for possible errors in catalogues, brochures, other printed materials, and website information. Crane Co. reserves the right to alter its products without notice, including products already on order provided that such alterations can be made without changes being necessary in specifications already agreed. All trademarks in this material are the property of Crane Co. or its subsidiaries. The Crane and Crane brands logotype (WESTLOCK CONTROLS®) are registered trademarks of Crane Co. All rights reserved.



WESTLOCK CONTROLS Head Office 280 N. Midland Avenue, Ste. 258 Saddle Brook, NJ 07663 United States	USA +1 201 794 7650	EUROPE +44 (0)1892 516277	ASIA +65 6266 4535
---	-------------------------------	-------------------------------------	------------------------------